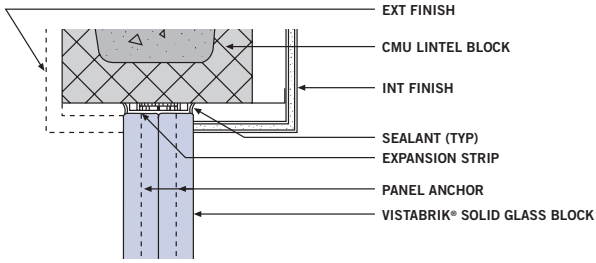
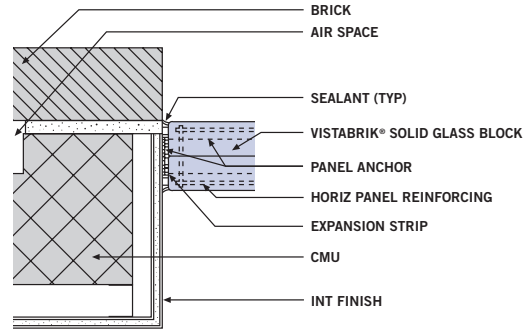


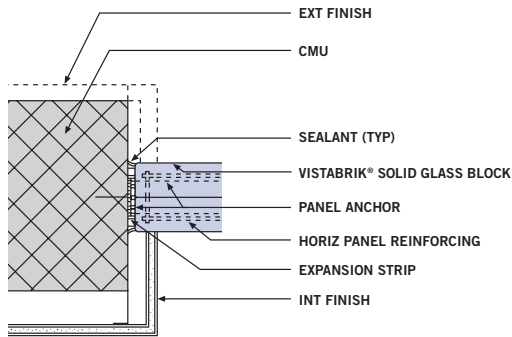
VISTABRIK® SOLID GLASS BLOCK DETAILS



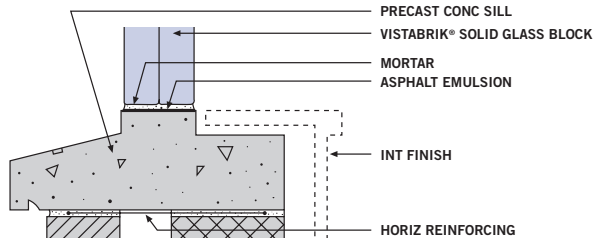
(PCD 037) Head – Solid Glass Block in CMU Wall



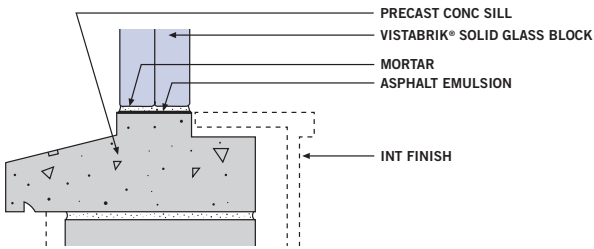
(PCD 041) Jamb – Solid Glass Block in Brick Masonry Cavity Wall



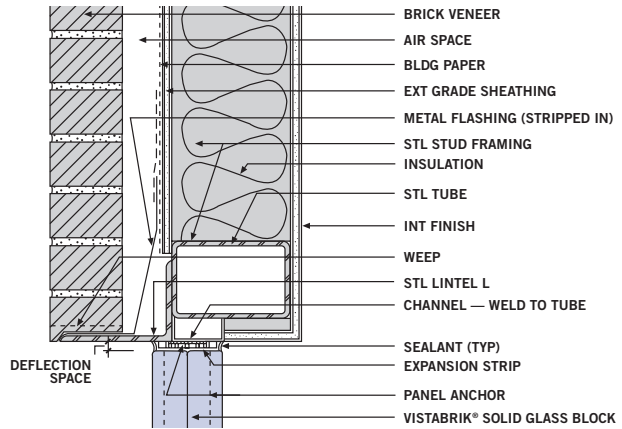
(PCD 038) Jamb – Solid Glass Block in CMU Wall



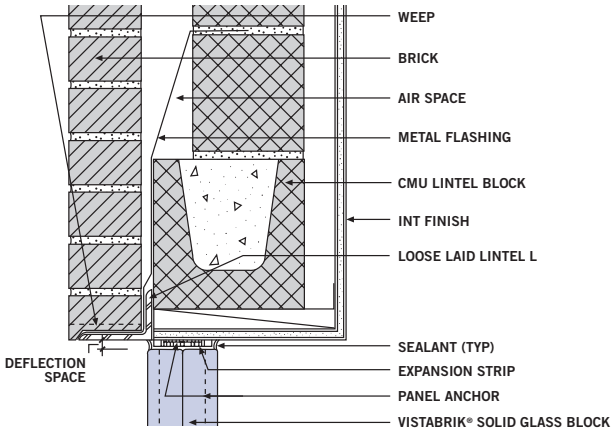
(PCD 042) Sill – Solid Glass Block in Brick Masonry Cavity Wall



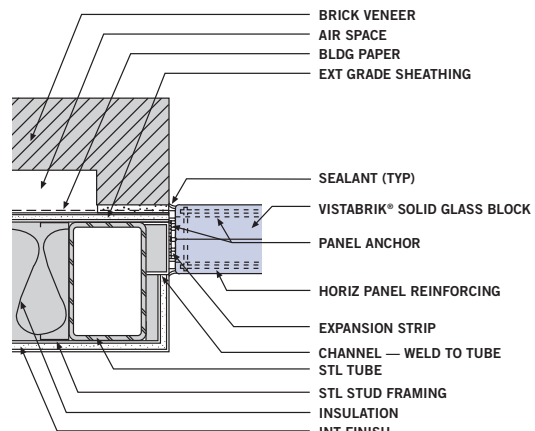
(PCD 039) Sill – Solid Glass Block in CMU Wall



(PCD 043) Head – Solid Glass Block in Steel Stud Wall with Brick Veneer

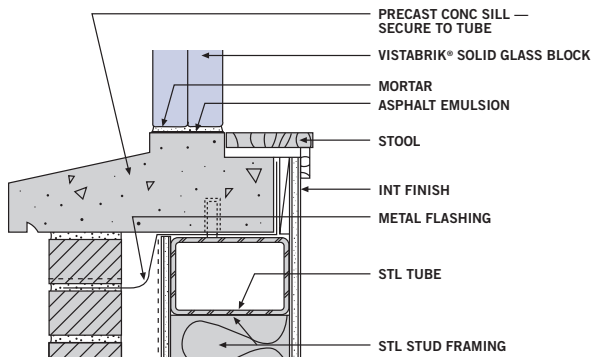


(PCD 040) Head – Solid Glass Block in Brick Masonry Cavity Wall

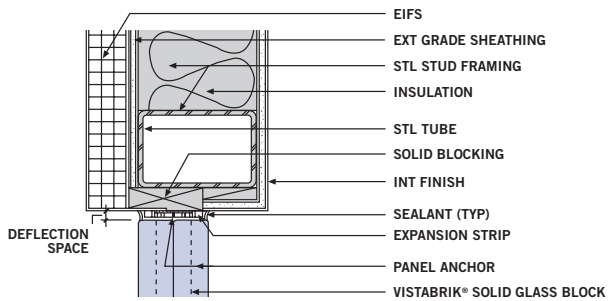


(PCD 044) Jamb – Solid Glass Block in Steel Stud Wall with Brick Veneer

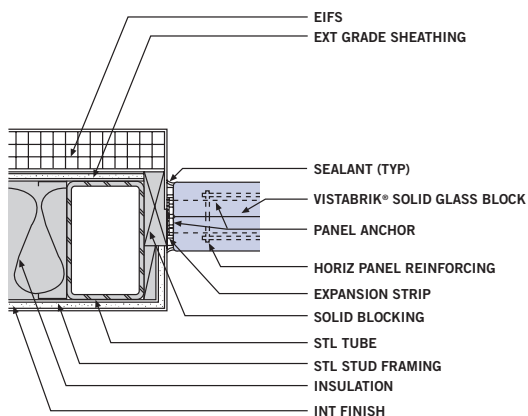
VISTABRIK® SOLID GLASS BLOCK DETAILS (continued)



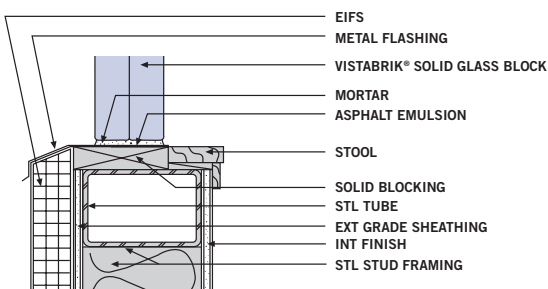
(PCD 045) Sill – Solid Glass Block in Steel Stud Wall with Brick Veneer



(PCD 049) Head – Solid Glass Block in Steel Stud Wall with Synthetic Plaster Finish

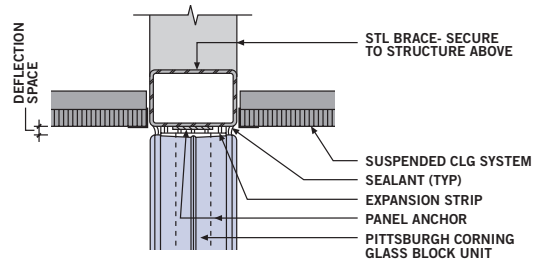


(PCD 050) Jamb – Solid Glass Block in Steel Stud Wall with Synthetic Plaster Finish

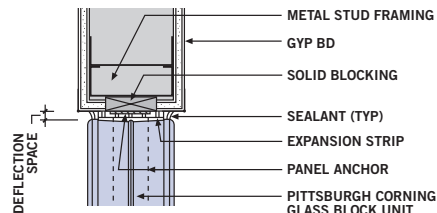


(PCD 051) Sill – Solid Glass Block in Steel Stud Wall with Synthetic Plaster Finish

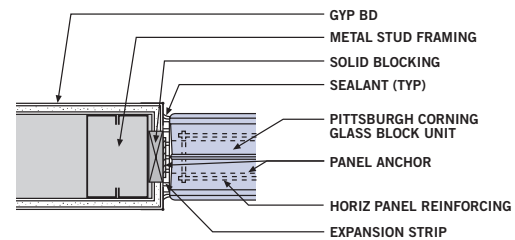
MISCELLANEOUS INTERIOR DETAILS



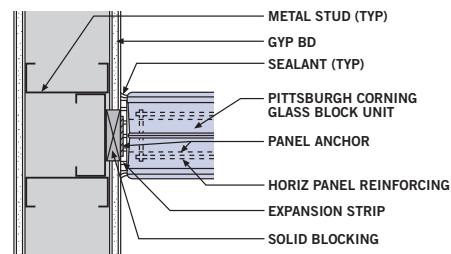
(PCD 148) Head – Glass Block in Suspended Ceiling



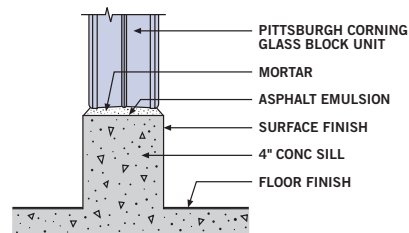
(PCD 149) Head – Glass Block in Partition



(PCD 150) Jamb – Glass Block in Partition

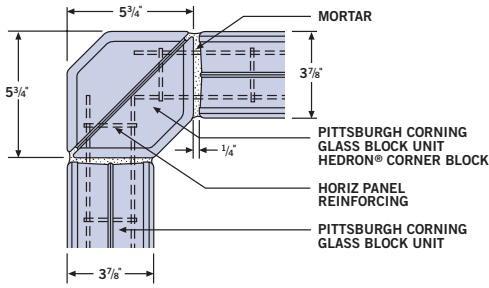


(PCD 151) Jamb – Glass Block Perpendicular to Partition

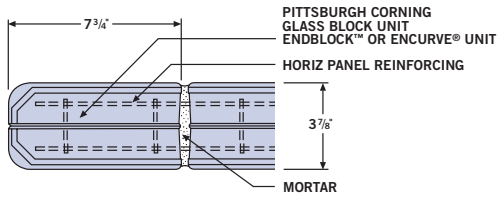


(PCD 241) Sill – Interior Concrete Floor Slab

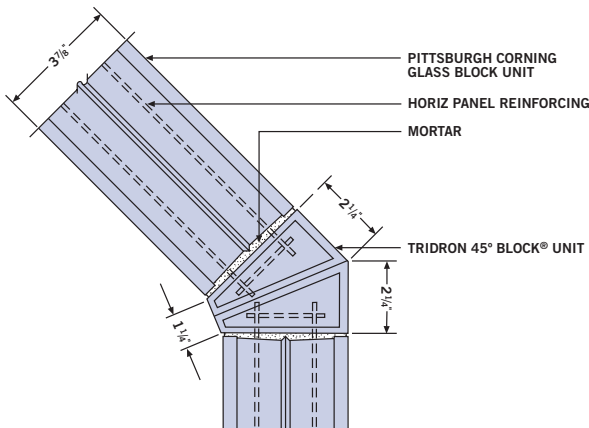
PREMIERE SERIES FINISHING UNITS DETAILS



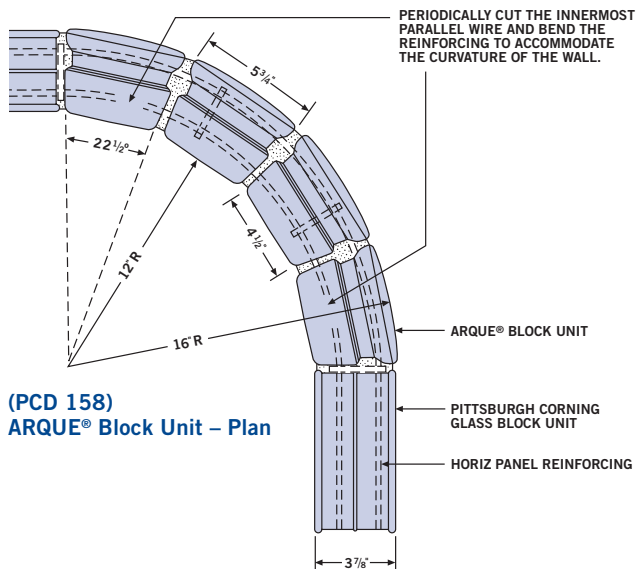
(PCD 155) Glass Block at Corner – Plan



(PCD 156) EndBlock™ or ENCURVE® Finishing Block – Plan



(PCD 157) TRIDRON 45° Block® Unit – Plan



(PCD 158) ARQUE® Block Unit – Plan

DIVISION 4 – MASONRY, SECTION 04270 GLASS UNIT

MASONRY

PART 1 – GENERAL

1.01 Summary
This specification has been prepared by Pittsburgh Corning Corporation using generally accepted and appropriate technical information but is not intended to be solely relied upon for the specification design or technical applications. Having no control over the elements of design, installation, workmanship or site conditions, Pittsburgh Corning assumes that the actual design choices and installation will be made by persons trained and qualified in the appropriate disciplines. Therefore, Pittsburgh Corning disclaims all liability potentially arising from the use or misuse of this specification.

1.02 Section Includes

- A. Glass Block Units, hollow or solid
- B. Integral Joint Reinforcement
- C. Mortar

1.03 Related Sections

- A. Steel Channels
- B. Sills, lintels, jambs
- C. Sealant (caulk)
- D. Packing Material

1.04 References

- A. ASTM A82—Spec. for Cold Drawn Steel Wire
- B. ASTM A153—Class B-2, Spec. Zinc Coating (Hot dip) on iron and steel hardware (Canada same)
- C. ASTM C144, Spec. for Aggregate for Masonry (Canada – A179-94)
- D. ASTM C150, Spec. for Portland Cement (Canada – CAN/CSA-A5-93)
- E. ASTM E163, Fire Test of Window Assemblies (equivalent to UL® 9 and CAN 4-S106-M80)
- F. ASTM C207, Spec. for Hydrated Lime for Masonry Purposes (Canada same)
- G. ASTM C270, Spec. for Mortar for Unit Masonry (Canada – A179-94)
- H. ASTM D1187, Type II—Spec. for Asphalt-Base Emulsions (For Metal Surfaces)
- I. ASTM D1227, Type III—Spec. for Emulsified Asphalt (For Porous Surfaces)

1.05 System Description

Knowledge of the following basic information is essential for proper installation of Pittsburgh Corning Glass Block units:

1. Glass block panels shall not be designed to support structural loads.
2. Maximum deflection of structural members supporting glass block panels shall not exceed L/600
3. Sills of all panels must be painted with a heavy coat of asphalt emulsion and must dry for two hours before first mortar bed is placed.
4. Provision for expansion and movement must be made at jambs and heads of all panels. Mortar must not bridge expansion spaces.

5. Mortar should be mixed and applied in accordance with the recommendations of Pittsburgh Corning Corporation. See Mortar Materials.
6. Design and installation of glass block projects should be done by whole units since cutting glass block is not recommended.

1.06 Submittals

- A. Product Data
Submit two (2) copies of manufacturer's literature and two (2) copies of manufacturer's installation instructions.
- B. Samples
1. Submit two (2) glass block units of each type specified, showing size, design and pattern of faces.
2. Submit representative samples of (panel reinforcing), (panel anchors), (expansion strips), and (sealant).
- C. Test Reports —
Fire Tests
Submit documents verifying glass block units are classified for a 3/4, 1 or 1 1/2-hour fire exposure according to ASTM E163, Underwriters Laboratories of Canada CAN 4-S106-M80 or UL® 9 "Fire Tests of Window Assemblies." All such glass block unit cartons shall carry appropriate UL® labels.
- 1.07 Storage and Protection**
A. Store unopened cartons of glass block in a clean, cool, dry area.
B. Protect opened cartons of glass block against windblown rain or water run-off with tarpaulins or plastic covering.
- 1.08 Project/Site Conditions**
A. Do not install glass block units when temperature is 40°F (4°C) and falling. Maintain the temperature of glass unit masonry above 40°F (4°C) for the first 48 hours after construction.
- 1.09 Warranty**
A. Pittsburgh Corning Corporation offers a limited 5-year warranty on Pittsburgh Corning Glass Block units.

PART 2 – PRODUCTS

- 2.01 Acceptable Manufacturers**
A. The drawings and specifications are based on catalog data, specifications and products of Pittsburgh Corning Corporation and designate the type and quality of work intended under this section.
1. Products of other manufactures proposed as equivalent quality must be submitted through the bidding contractors for written approval of the architect ten days prior to the bid date.
2. Supporting technical data, samples, published specifications and the like must be submitted for comparison.

3. Contractor shall warrant that proposed substitutions, if accepted, will provide performance equivalent to the materials specified herein.

4. These specifications have been developed by Pittsburgh Corning Corporation based on extensive tests of panels composed of Pittsburgh Corning Glass Block masonry units manufactured by Pittsburgh Corning Corporation. These specifications do not apply to panels made from glass block masonry units produced by any other manufacturer.

2.02 Glass Block Units

A. Glass block units, nominally _____ inch x _____ inch x _____ inch thick shall be partially evacuated hollow units made of clear, colorless glass with a polyvinyl butyral edge coating. Pattern type: _____.

B. Solid glass units, nominally _____ inch x _____ inch x _____ thick made of clear colorless glass with a polyvinyl butyral edge coating. Pattern type: VISTABRIK® Solid Glass Block.

NOTE: Pittsburgh Corning Corporation offers a polyvinyl butyral edge coating for better bonding and to provide for an expansion/contraction mechanism for each block.

2.03 Accessories

A. Panel Reinforcing: two parallel 9 gauge wires either 1³/₈ inch or 2 inch on center with electrically butt-welded crosswires spaced at regular intervals, hot dipped galvanized after welding, by Pittsburgh Corning Corporation.

B. Panel Anchors: 20 gauge perforated steel strips 24 inches long by 1³/₄ inches wide, hot dipped galvanized after perforation, by Pittsburgh Corning Corporation.

C. Expansion Strips: made of polyethylene foam with a thickness of ³/₈ inch, by Pittsburgh Corning Corporation.

D. Asphalt Emulsion: a water-based asphalt emulsion, by Karnak Chemical Corp. (Karnak 100, 1-800-526-4236), or equal.

E. Sealant (caulk): non-staining, waterproof mastic, (silicone), (urethane), (_____) type.

Below is a list of the toll-free telephone numbers of the Technical Departments of the following sealant manufacturers:

- Dow Corning Corporation, 1-800-248-2481 in Midland, MI
- General Electric, 1-800-255-8886, in Waterford, NY
- Sonneborn Building Products, 1-800-243-6739 in Minn., MN
- Tremco Incorporated, 1-800-321-7906 in Beachwood, OH Below is information on the fire retardant sealant used on glass block fire tests:
- Fyre-Sil Silicone Sealant (for fire-rated construction), by Tremco, Inc. (1-800-321-7906)

F. Packing (Backer Rods): polyethylene foam, neoprene, fibrous glass or equal as approved by sealant manufacturer.

2.04 Mortar Materials

Mortar: Type S in accordance with ASTM C270. Mortar shall be 1 part Portland Cement, 1/2 part lime, and sand equal to 2¹/₄ to 3 times the amount of cementitious material (cement plus lime), all measured by volume. (For exterior glass block panels, an integral type waterproofer should be added to the mortar mix.)

No antifreeze compounds or accelerators allowed.

NOTE: All model building codes also accept the use of Type N mortar.

1. Portland Cement: Type 1 in accordance with ASTM C150. If a waterproof Portland Cement is used, the integral type waterproofer shall be omitted. (Masonry Cement is not recommended.) Color: _____
2. Lime: Type S, in accordance with ASTM C207. Shall be a pressure-hydrated dolomitic lime, provided that not less than 92% of all the active ingredients are completely hydrated.
3. Sand: A clean, white quartzite or silica type, essentially free of iron compounds, in accordance with ASTM C144, not less than 100% passing a No. 8 sieve.
4. Integral Type Water-repellent: Stearate type by Sonneborn Building Products (Hydrocide Powder, 1-800-243-6739), or equal. Note: Add hydrocide powder to dry mortar mix. Do not add powder to wet mortar mix.
5. External Type Water proofer: Water based silane sealer type by Sonneborn Building Products (HYDROZO ENVIROSEAL™ 20, 1-800-243-6739). Note: Remove excess sealer from glass surfaces soon after application.

PART 3 – EXECUTION

3.01 Preparation

A. Verify that (channels), (panel anchors) have been provided at head and jambs for the purpose of providing panel support within the opening.

B. Mix all mortar components to a consistency that is drier than mortar for ordinary masonry. Retempering the mortar after it has taken its initial set shall not be permitted. Do not use antifreeze compounds or accelerators.

C. *Freshly mixed mortar may create skin irritation. Avoid direct contact where possible and wash exposed skin areas promptly with water. If any mortar gets into the eyes, rinse immediately with water and get prompt medical attention.*

3.02 Installation

A. Cover sill area with a heavy coat of asphalt emulsion. Allow emulsion to dry at least 2 hours before placing mortar.

B. Where panel anchors are used at jambs and heads in lieu of channel or chase surrounds, install panel anchors in the same joints (16 inches o.c. maximum) where panel reinforcing will be laid. Panel anchors are to be embedded a minimum of 12" into the mortar joints.

C. Place or adhere expansion strips to jambs and head. Make certain expansion strip extends to sill and covers leg of panel anchor which is attached to jambs and head.

D. Set a full mortar bed joint, applied to sill.

E. Set lower course of block. Maintain a uniform joint width of ¹/₄ to ³/₈ inch plus or minus ¹/₈ inch. All mortar joints must be full and not furrowed. Steel tools must not be used to tap blocks into position. (Place a rubber crutch tip on end of trowel to tap block into position.) Do not realign, tap or otherwise move block after initial placement. For VISTABRIK® Solid Glass Block units, typical mortar joint is ³/₈ inch. Special VISTABRIK® spacers that provide a ³/₈ inch thick mortar joint are available.

F. Install panel reinforcing every 16 inches o.c. maximum in the horizontal mortar joints and in joints immediately above and below all openings within panels. Run reinforcing continuously from end to end of panels. Lap reinforcing not less than 6 inches whenever it is necessary to use more than one length. NOTE: In corrosive atmospheres, (i.e. saline air, chlorine air, etc.), the use of stainless steel channels, reinforcing and panel anchors should be considered. For VISTABRIK® Solid Glass Block, use 1³/₈ inch wide reinforcing (same as Thinline™ Series glass block). Do not bridge expansion joints with reinforcing. Install reinforcing as follows:

- Place lower half of mortar in bed joint. Do not furrow.
- Press panel reinforcing into place.
- Cover panel reinforcing with upper half of mortar bed and trowel smooth. Do not furrow.

G. Place full mortar bed for joints not requiring panel reinforcing – do not furrow. Maintain uniform joint width.

H. Set succeeding courses of block. Spaces at head of panel and jambs must remain free of mortar for caulking with sealant.

I. Use only wooden or rubber tipped tools when tapping glass blocks into place.

J. Strike joints smooth while mortar is still plastic and before final set. Remove surplus mortar from faces of glass blocks and wipe dry. (See Section 3.03). Tool joints smooth and concave before mortar takes final set. At this time, remove and clean out all excess mortar from jambs, head and other locations.

K. After final mortar set (approximately 24 hours), install packing tightly between glass block panel and jamb and head locations. Leave space for sealant.

L. Apply sealant evenly to the full depth of recesses as indicated on the drawings and in accordance with the manufacturers' application manual and instructions.

M. *All exterior glass block panels shall be well sealed to prevent water entry.*

3.03 Cleaning

A. Remove surplus mortar from the faces of the glass block at the time joints are struck or tooled. **Mortar should be removed while it is still plastic** using a clean, wet sponge or an ordinary household scrub brush with stiff bristles.

B. Do not use harsh cleaners, acids (of any strength), abrasives or alkaline materials while cleaning glass block. Never use a wire brush to remove mortar from glass block surfaces.

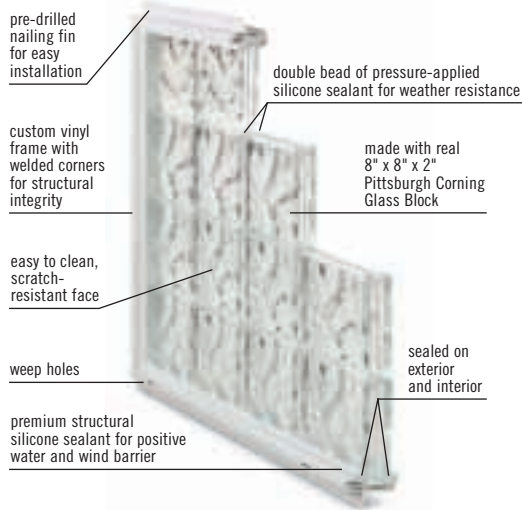
C. Final mortar removal is accomplished with a clean, wet sponge or cloth. Rinse sponge or cloth frequently in clean water to remove abrasive particles that could scratch glass surfaces. Allow any remaining film on the block to dry to a powder.

D. After all sealants, caulking, etc., have been applied, remove excess caulking materials with commercial solvents such as xylene, toluene, mineral spirits or naphtha and follow with normal wash and rinse. Be careful not to damage caulking by overgenerous application of strong solvents. Comply with solvent manufacturers' directions on label for toxicity and flammability warnings.

E. Final cleaning of glass block panels is accomplished after they are completely installed. Wait until panels are not exposed to direct sunlight. Start at the top of the panel and wash with generous amounts of clean water. Dry all water from the glass block surface. Change cloth frequently to eliminate dried mortar particles or aggregate that could scratch the glass surface. To remove the dry powder from the glass surfaces, use a clean, dry, soft cloth. For stubborn or hard to remove powder or stains, the use of an "extra fine" steel wool (grades 000 or 0000) is suggested. Try this first in an unobtrusive area.



LightWise® Windows give you the beauty and durability of real glass block and less installation. LightWise® Windows make installing glass block windows easier than ever before.



This new, lighter weight design (2" thick glass block), means LightWise® Windows are even easier to install: just place in the opening and fasten along the built-in nailing fins.

PITTSBURGH CORNING GLASS BLOCK SHOWER SYSTEMS

New, easy-to-install Pittsburgh Corning Glass Block Shower Systems are available with all of the major components needed to build one of these bright beautiful showers.

Features/Benefits

All Pittsburgh Corning Shower Systems are pre-designed to include:

- Premiere Series Glass Block
- Customized Acrylic Base
- Doors
- Detailed Installation Instructions and Bill of Materials to Simplify Ordering and Installation

Single Source of Supply

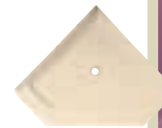
All components are available through local distributors and select home centers (through special order). Individual components are also sold separately.



THE WALK-IN



THE CLASSIC



THE NEO ANGLE



PITTSBURGH CORNING PROJECT DESIGN ASSISTANCE

Unmatched Service

When specifying Pittsburgh Corning Glass Block, you receive a level of technical support and guidance unavailable from any other glass block producer.

Pittsburgh Corning Representative and Distributor Assistance

Services are available through your local Pittsburgh Corning Representative and Distributor. They will arrange for drawing review and technical guidance, full sample selection, professional installation, on-site assistance, and provide technical support after the job is completed, if needed.

Technical Service Department

Our Technical Service Department, located in Pittsburgh, is available for technical advice, project design assistance, and plan review. Please call the Pittsburgh Corning Glass Block Resource Center, 1-800-624-2120.

Pittsburgh Corning Glass Block Resource Center

From your first inquiry, information is readily available to you, toll-free from anywhere in the continental United States and Canada. Our Resource Center, 1-800-624-2120, is your initial channel for literature requests and answers to technical questions.



To further our dedication to the architectural community, Pittsburgh Corning is teaming up with the AIA to bring you innovative ways to earn continuing education credits, including a great slide presentation that we can set up in your offices. This program provides HSW Learning Units. For more information, visit our website at www.pittsburghcorning.com.

PITTSBURGH CORNING GLASS BLOCK WEBSITE

www.pittsburghcorning.com

features application photos, product information, specifications, installation details, literature, continuing education, case histories, and much more information on how to design with Pittsburgh Corning Glass Block products.

The information contained herein is accurate and reliable to the best of our knowledge. But, because Pittsburgh Corning Corporation has no control over installation workmanship, accessory materials, or conditions of application, NO EXPRESS OR IMPLIED WARRANTY OF ANY KIND, INCLUDING THOSE OF MERCHANTABILITY OR FITNESS FOR A PARTICULAR PURPOSE, IS MADE as to the performance of an installation containing Pittsburgh Corning products. In no event shall Pittsburgh Corning be liable for any damages arising because of product failure, whether incidental, special, consequential or punitive, regardless of the theory of liability upon which any such damages are claimed. Pittsburgh Corning Corporation provides written warranties for many of its products, and such warranties take precedence over the statements contained herein.



800 Presque Isle Drive
Pittsburgh, PA 15239-2799
Tel: 1-800-624-2120
(Glass Block Resource Center)
www.pittsburghcorning.com



©2004 Pittsburgh Corning Corporation



UL® is a registered trademark of Underwriters Laboratories, Inc.

All other trademarks and registered trademarks in this brochure are owned and protected by Pittsburgh Corning Corp. Pittsburgh, PA 15239

Printed in U.S.A. GB-185 6/04 100M